



FREEHOLD

House - Semi-Detached

# CHAIN FREE | THREE BEDROOM SEMI- DETACHED HOUSE | HUGE

Offers In Excess Of

# £525,000

## FEATURES

- Three Bedroom Semi-Detached House
- Chain Free
- Three Reception Rooms
- Potential to Extend S.T.P.P.
- Requires Modernisation
- Close to local schools



**SPACE**  
RESIDENTIAL

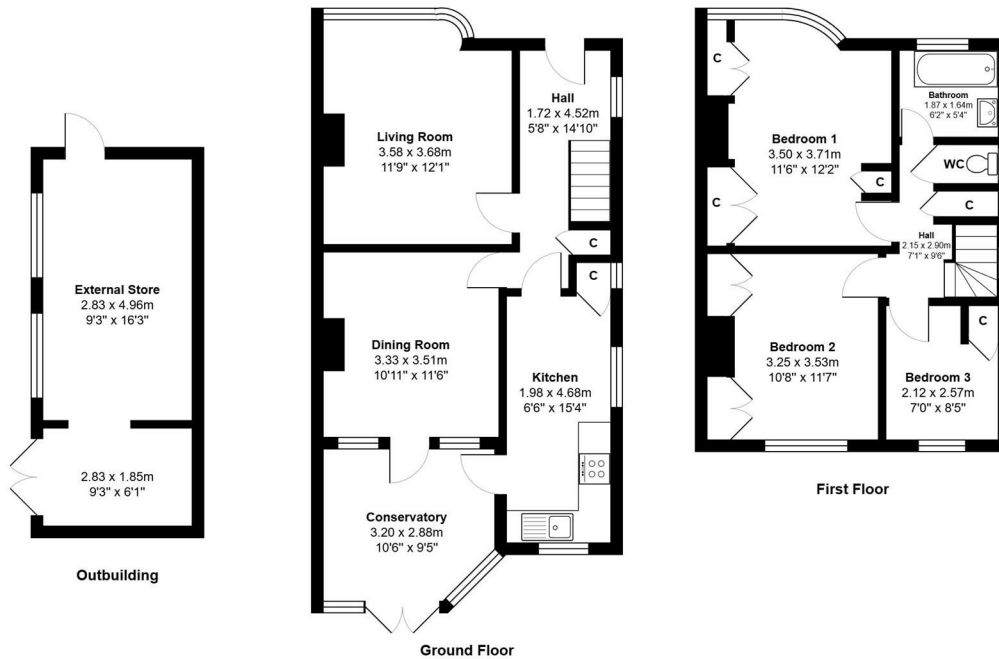
# 3 Bedroom House - Semi-Detached located in London

Space Residential are pleased to offer this three-bedroom semi-detached family home situated on Tavistock Road, Edgware.

The property comprises three reception rooms, kitchen and a family bathroom. To the first floor are three bedrooms, making this an ideal purchase for families looking to establish themselves in a sought-after residential location.

Whilst the property would benefit from updating, it presents an excellent opportunity for buyers to modernise and create a home tailored to their own requirements. Subject to planning, there is also potential to extend and further enhance the accommodation.

Externally, the property benefits from off-street parking to the front and a generous rear garden, providing ample outdoor space for family enjoyment and future potential.



Total Area: 117.6 m<sup>2</sup> ... 1266 ft<sup>2</sup>  
All measurements are approximate and for display purposes only

Call us on

**0208 906 2222**

[info@spaceresidential.com](mailto:info@spaceresidential.com)  
[spaceresidential.com](http://spaceresidential.com)

**Council Tax Band**

**E**

Energy Efficiency Rating		Current	Potential
<i>Very energy efficient - lower running costs</i>			
(92 plus)	A		
(81-91)	B		
(69-80)	C		
(55-68)	D		
(39-54)	E	59	81
(21-38)	F		
(1-20)	G		
<i>Not energy efficient - higher running costs</i>			
<b>England &amp; Wales</b>		EU Directive 2002/91/EC	

Agents Note: Whilst every care has been taken to prepare these particulars, they are for guidance purposes only. All measurements are approximate and are for general guidance purposes only and whilst every care has been taken to ensure their accuracy, they should not be relied upon and potential buyers are advised to recheck the measurements.

